

## Reverse Osmosis Construction – March 2026

In March 2026, the contractor continued the installation of settled water piping. A water heater, wash sink, and associated plumbing were installed in the chemical building. Necessary holes were core-drilled in the CMF basin walls. The contractor also poured the RO trench drains and installed stone pads under the western RO skids in preparation of the floor being placed. The western portion of the RO slab/floor was placed. Finally, the electrical contractor continued to install various sized conduit and wiring throughout the project site, including grounding for the RO units.



CMF Basin Piping Installation



Trench Drain Forming and Pouring



Cored CMF Basins



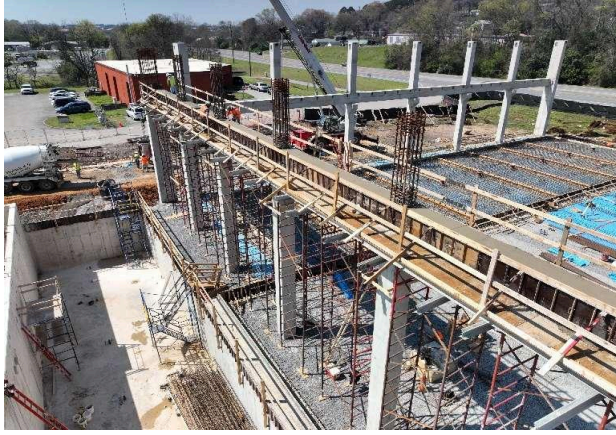
Chemical Building Work



Preparing to Place Floor



Western RO Floor Placed



Overhead Beam Placement



Installing RO Unit Ground Wiring



Aerial View from Northeast



Aerial View from Northwest