

Reverse Osmosis Construction – February 2026

In February 2026, the contractor continued forming and pouring concrete for the bridge crane support columns. The contractor also formed and poured the bridge crane elevated support beam along column line “F”. Forming and pouring concrete for the ceramic microfilter (CMF) basin walls continued. Installation of underground piping and conduit continued. Drywall installation was performed inside the chemical building. Finally, the electrical contractor continued to install various sized conduit throughout the project site, including inside the chemical building.



Forming Bridge Crane Elevated Support Beam



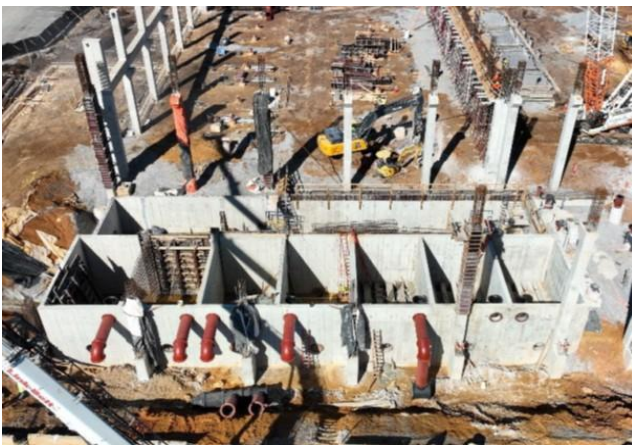
Bridge Crane Elevated Support Beam



Pouring Bridge Crane Elevated Support Beam



Underground piping installation



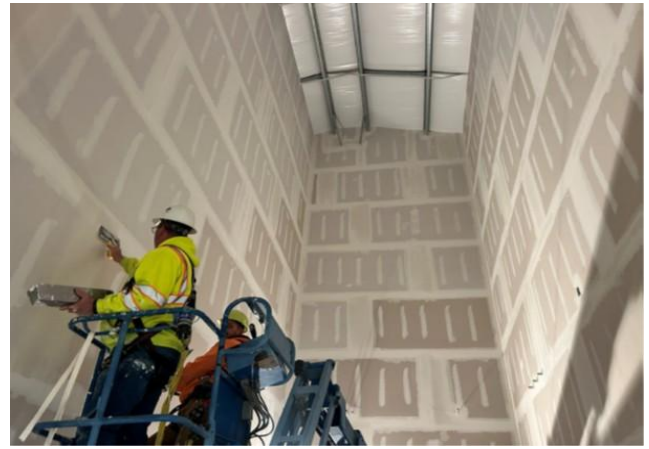
CMF Basins with piping installation



Aerial View of Main Process Building



Column extension above Bridge Crane Beam



Drywall Installation in Chemical Building



Aerial View from North



Aerial View from Northwest