

## Reverse Osmosis Construction – November 2025

In November 2025, the contractor (Max Foote Construction) continued forming and pouring concrete for the bridge crane support columns. Also, progress continued on the required rock excavation in the ceramic microfilter (CMF) area. The contractor formed and poured concrete in CMF Basins 5, 6, and 7, and CMF basin 7 underwent hydrostatic testing. Approx. 160 linear feet of waste stream piping was installed. In the chemical building, the housekeeping pads were formed and poured, and the chemical storage tanks were installed. The electrical contractor continued to install various sized conduit throughout the project site. Finally, the pre-engineered metal chemical building was erected.



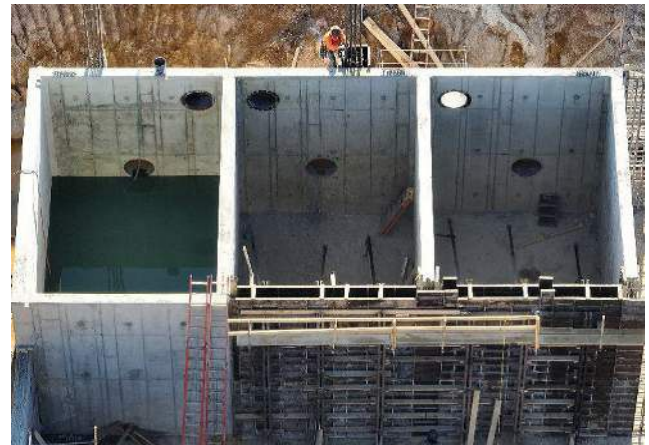
Bridge Crane Support Beam Form/Pour



CMF Basins Forming



Aerial View



CMF Basin 7 Hydrostatic Test



CMF Basin Wall Pour



Chemical Building Framework

Chemical Storage Tanks Installed



Chemical Building



Aerial View from Southeast



Aerial View from Northwest