

Reverse Osmosis Construction – October 2025

In October 2025, the contractor continued to form and pour concrete for the electrical room grade beam. The contractor also continued to make progress on the required rock excavation in the ceramic microfilter (CMF) area. In CMF Basins 5, 6, and 7, the contractor formed and poured 81 yards of concrete. Approx. 560 linear feet of 24” ductile iron pipe was installed. The electrical contractor continued to install various sized conduit throughout the project site. Anchor bolts installed for chemical building columns. And finally, vertical bridge crane columns continued to be formed and poured.



Grade Beam Form/Pour



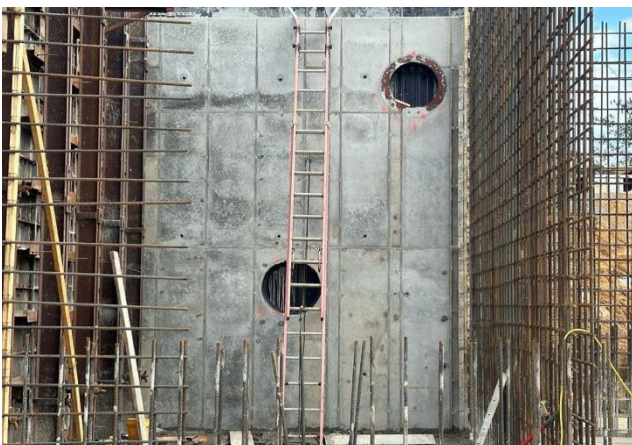
CMF Basins Floor Area



Piping Installation



CMF Basin Wall Pour



CMF Basin Wall



Bridge Crane Column Form



CMF Basin Walls Form



CMF Basin Walls



Aerial View from Southeast



Aerial View from Northwest